

Towards Gender Inclusive Investment Practices



MEET THE INVESTORS



Co-Design Sprint by MIT D-Lab & Intellecap

How can we catalyze a community of impact investors to lead the sector with gender smart strategies?

MIT D-Lab and Intellecap are convening a group of investors, entrepreneurs and gender impact actors to identify and solve for key roadblocks investors face in implementing gender inclusive practices in their organizations.

THE CHALLENGE

More and more investors are interested in deploying gender inclusive capital while at the same time meeting the risk and return objectives appropriate for their fund.

Despite the growing momentum around Gender Lens Investing (GLI), interested fund managers have limited options when it comes to finding the right support that they need for embedding gender smart practices across their investment cycle.

The Co-Design sprint offers new opportunities for investors to identify and activate new strategies to close the gender finance gap in India

Workshop themes

- 1 Improving sourcing/recruitment efforts to bring in more female-led and gender-forward businesses.
- 2 Recognize, eliminate bias in screening and due diligence process
- 3 Track & use gender impact data in portfolio

WORKSHOP SCHEDULE

TUE, OCT 12TH
1600-1730 IST



KICKOFF AT SANKALP

TUE, OCT 19TH
1630-1930 IST



SOURCING & RECRUITING

THUR, OCT 21ST
1630-1930 IST



DUE DILIGENCE PROCESS

TUE, OCT 26TH
1630-1930 IST

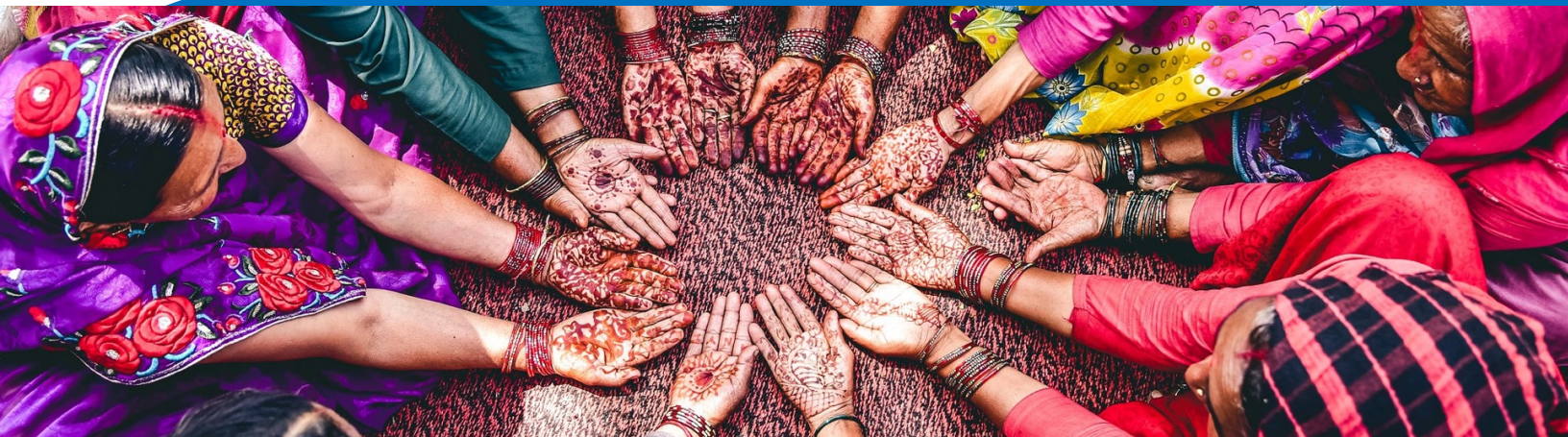


DATA COLLATION

THUR, OCT 28TH
1630-1930 IST



VISION FORWARD



WHAT IS UNIQUE ABOUT THE CO-DESIGN SPRINT?

AGILE: Unlike most other training workshops, the sprint is hands-on, interactive, and focused on accelerating tangible GLI outcomes for participating investors and their funds.

CREATIVE: Over the course of the sprint, participants experience design and prototyping methodologies proven to unlock creativity, experimentation, and innovation.

INCLUSIVE: By soliciting different viewpoints the sprint creates space for transparent and collaborative discussions. The event meaningfully incorporates the voices of entrepreneurs to gather rich and often overlooked insights. It strategically incorporates interested fund colleagues, partners and LPs to create energy and buy-in for implementing the solution.

COLLABORATIVE: Finally, the work of the sprint will be done alongside other investors, as part of a cohort of like-minded peers interested in collaborating and building strategies to mitigate gender biases in asset allocation.

Co-Design Sprint Outcomes

Investor spotlights (plenary): Two investors will introduce their GLI vision and key challenges.

Problem framing (facilitated team-work): Design teams including gender experts, Gender forward entrepreneurs, ecosystem actors and other investors, will map out the investor's challenge and identify key opportunities for improvement

Solution ideation (facilitated team-work): Design team will generate ideas to solve the barriers identified and share best practices from their own experience and practice

Brain trust (plenary): Investors will identify solutions they would like to move forward and collect advice from participants on key consideration for enacting these solutions.

If you want to learn more, please e-mail Jona Repishti at repishti@mit.edu

ABOUT THE ORGANIZERS

**MIT
D-Lab**

MIT D-Lab works with people around the world to develop and advance collaborative approaches and practical solutions to global poverty challenges.



intellectap

Intellectap is the advisory arm of The Aavishkaar Group, which works to build businesses that can benefit the underserved segments across Asia and Africa.

This Co-Design Sprint is supported by the [Aspen Network for Development Entrepreneurs Advancing Women's Empowerment Fund](#).